

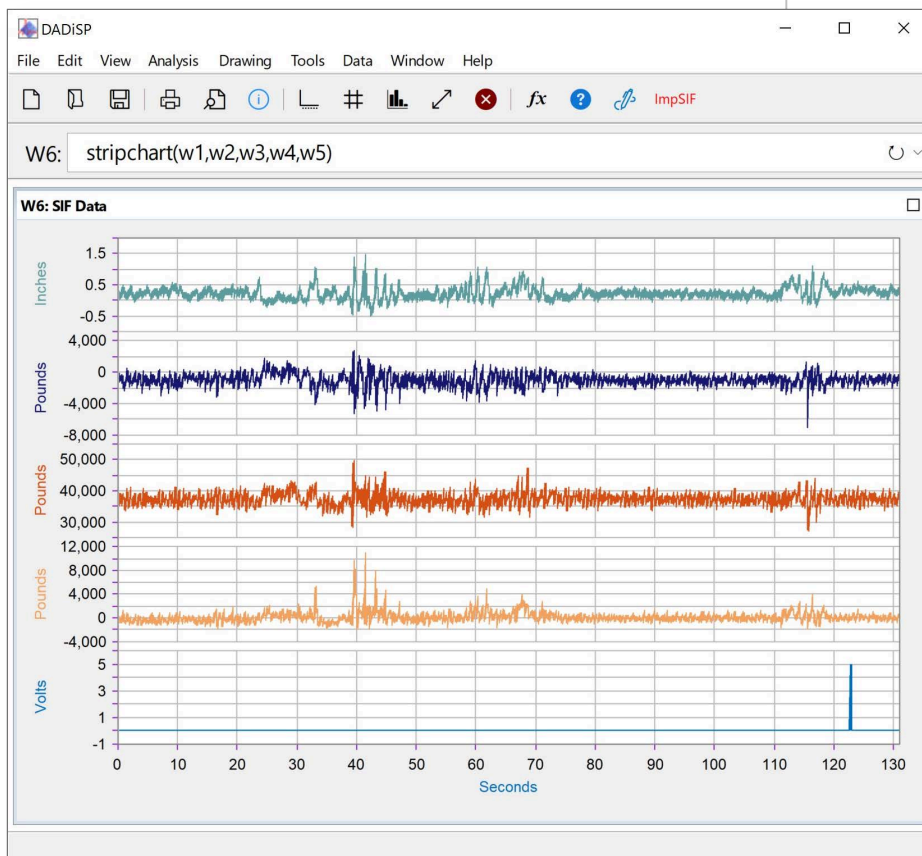
SoMat Information File Import Module

DADiSP/SIF is a dialog based module to import SoMat (1) Information Files. SIF files of any size and number of channels are supported.

Designed for data generated by a variety of SoMat data acquisition systems, DADiSP/SIF imports all supported channels saved in a SIF file and automatically applies the necessary data scaling along with channel specific sample rates and engineering units.

KEY FEATURES

- Simple User Interface
- Fast and Direct SIF Import
- Reads SIF Files of any size
- Preserves Original Data Channel Properties
- Automatic Display of Imported Channels
- Supports Multiplexed and De-multiplexed File Formats



(1) SoMat is a registered trademark of HBM, Inc.

SoMat Information File

The SoMat Information File or SIF format stores multiple channels of data generated by the SoMat 2500, eDAQ and other SoMat data acquisition systems. The format was designed to efficiently store data records from multiple SoMat data modes.

SIF Import

DADiSP/SIF directly imports SIF data files and automatically applies all data scaling and sets sample rate and engineering unit information for each channel. Multiple data runs are saved in separate DADiSP datasets. The imported channels can be loaded into separate Windows or combined into a single Window for display..

SIF Formats

Both frame multiplexed and full de-multiplexed record formats are supported for all time history and rainflow data channels.

The following data modes are currently imported:

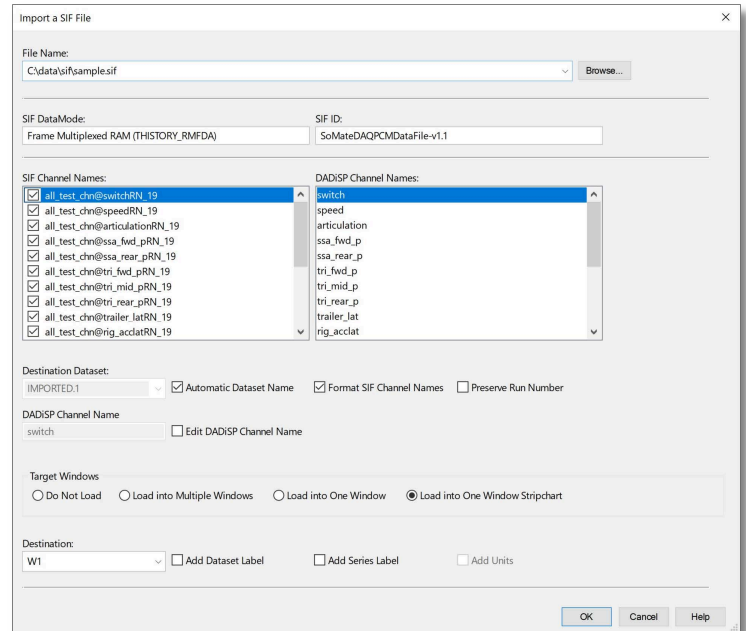
- De-Multiplexed RAM THISTORY, SIF keyword 1 and 7
- De-Multiplexed RAM RAINFLOW, SIF keyword 4
- De-Multiplexed RAM TAL, SIF keyword 6
- Frame Multiplexed RAM THISTORY_RMFD, SIF keyword 201

Simple Menu Interface

DADiSP/SIF runs from the DADiSP worksheet and is accessed by a press of a button. The SIF user interface displays important file information and automatically formats SIF channel names into appropriate DADiSP series names..

Full Analysis System

DADiSP provides a complete analysis, display, and processing environment using SIF data. The integration of DADiSP/SIF into DADiSP makes it easy to automate data import and analysis applications completely through SPL (Series Processing Language), macros, and command files.



SIF Functions

DADiSP/SIF is a fully dialog based module. However, the following functions can be used on a standalone basis to read SIF files.

SIF Functions

- | | |
|-----------|---|
| sifimport | Import a SIF file into one or more datasets |
| sifinfo | Return information about a SIF file |

Requirements

DADiSP/SIF requires DADiSP 6.5 B01 or higher. Contact us for information about updating your current version of DADiSP.