

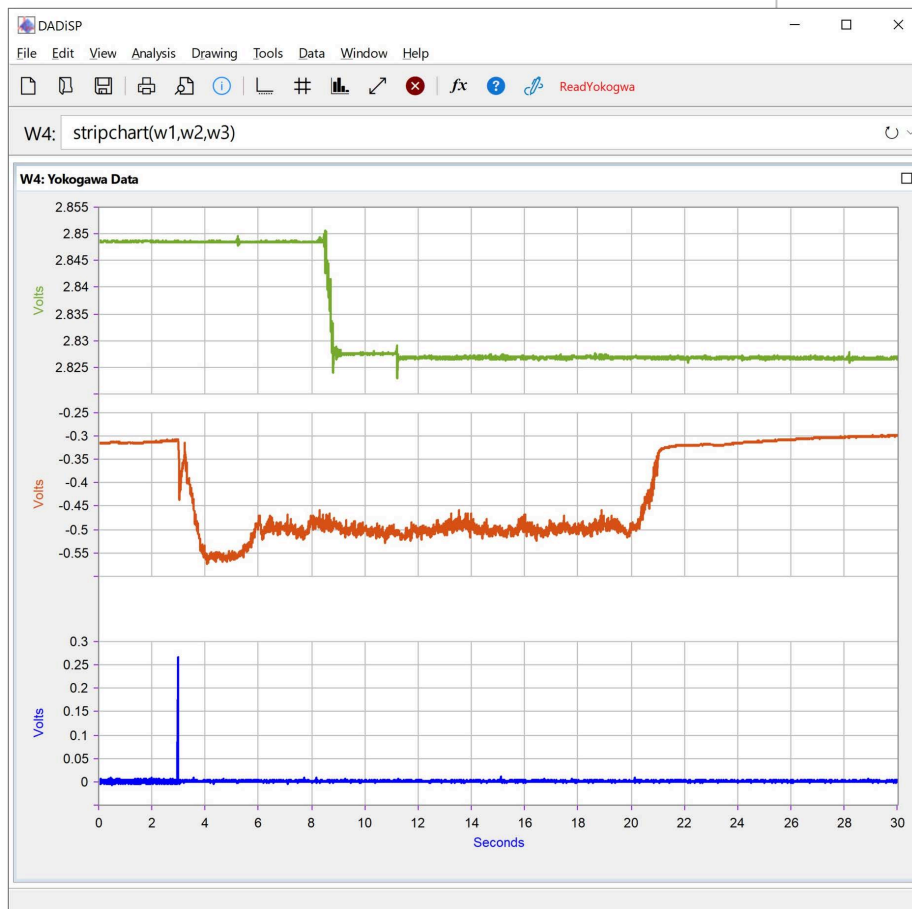
Yokogawa® WVF/WDF Import Module

DADiSP/WVF is a dialog based module to read data files saved in **Yokogawa (1)** WVF or WDF File format. WVF/WDF files of sizes up to 2 GB with any number of channels are supported.

Designed for data generated by a variety of Yokogawa instruments, DADiSP/WVF imports data channels saved in a WVF or WDF file and automatically applies the necessary data scaling along with channel specific sample rates and engineering units.

KEY FEATURES

- Simple User Interface
- Fast and Direct WVF/WDF Import
- Reads Files of any Size
- Optimized series processing for fast loading of huge files.
- Preserves Original Data Channel Properties
- Optional Automatic Display of Imported Channels



(1) Yokogawa is a registered trademark of Yokogawa, Inc.

Yokogawa WVF/WDF File

The Yokogawa WVF/WDF file, stores multiple channels of data generated by a variety of instruments in binary form. The file format was designed to efficiently store multi-channel data records.

WVF Import

DADiSP/WVF directly imports WVF/WDF data files and automatically applies all data scaling and sets sample rate and engineering unit information for each channel. The imported channels can be loaded into separate Windows or combined into a single Window for display.

Multiple File Types

Single and multi-channel WVF/WDF files are fully supported. Optimized buffered I/O provides efficient reading of huge files.

Simple Menu Interface

DADiSP/WVF runs from the DADiSP worksheet and is accessed by a press of a button. The WVF user interface displays important file information and automatically formats raw WVF/WDF channel values into properly scaled engineering data. Individual channels can be selected. Channel names and date/time information is preserved.

Full Analysis System

DADiSP provides a complete analysis, display, and processing environment using WVF/WDF data. The integration of DADiSP/WVF into DADiSP makes it easy to automate data import and analysis applications completely through SPL, Series Processing Language, macros, and command files.

Requirements

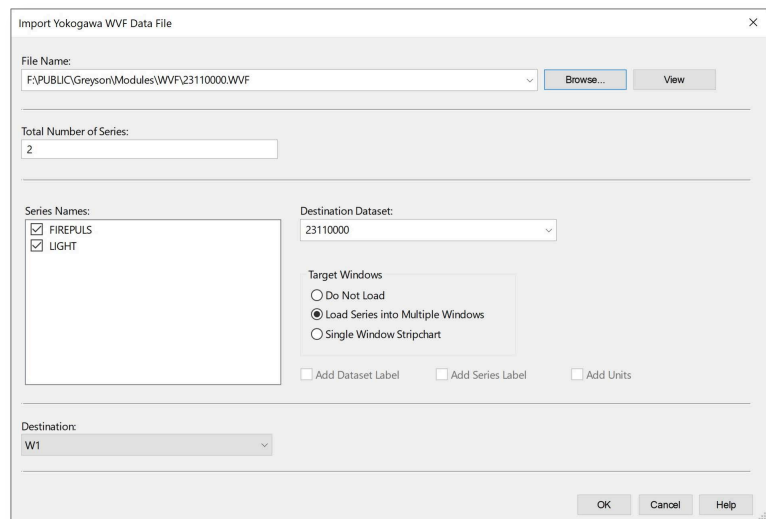
DADiSP/WVF requires DADiSP 6.5 B01 or higher. Contact us for information about updating your current version of DADiSP.

New Features

DADiSP/WVF 4.1 now supports the WDF file format. A WDF file is converted on the fly into a WVF file and associated header and then imported.

Binary WDF files saved by Yokogawa DL or DLM series instruments can be imported. The following Yokogawa models are currently supported:

DL6054, DL6104, DL6154, DL850, DL850E, DL850EV, DL850V, DL9040, DL9040L, DL9140, DL9140L, DL9240, DL9240L, DL9505L, DL9510L, DL9705L, DL9710L, DLM2022, DLM2024, DLM2032, DLM2034, DLM2052, DLM2054, DLM4038, DLM4058, DLM6054, DLM6104, SB5310, SB5710, SL1000.



WVF/WDF Functions

DADiSP/WVF is a fully dialog based module. However, the following functions can be used on a standalone basis to read WVF/WDF files.

WVF Function List

wvffload	Read a WVF file
wdf2wvf	Convert a WDF file to a WVF file
guiwvf	Invoke the WVF GUI