

# DADiSP / DEWESoft

## DEWESoft® File Module

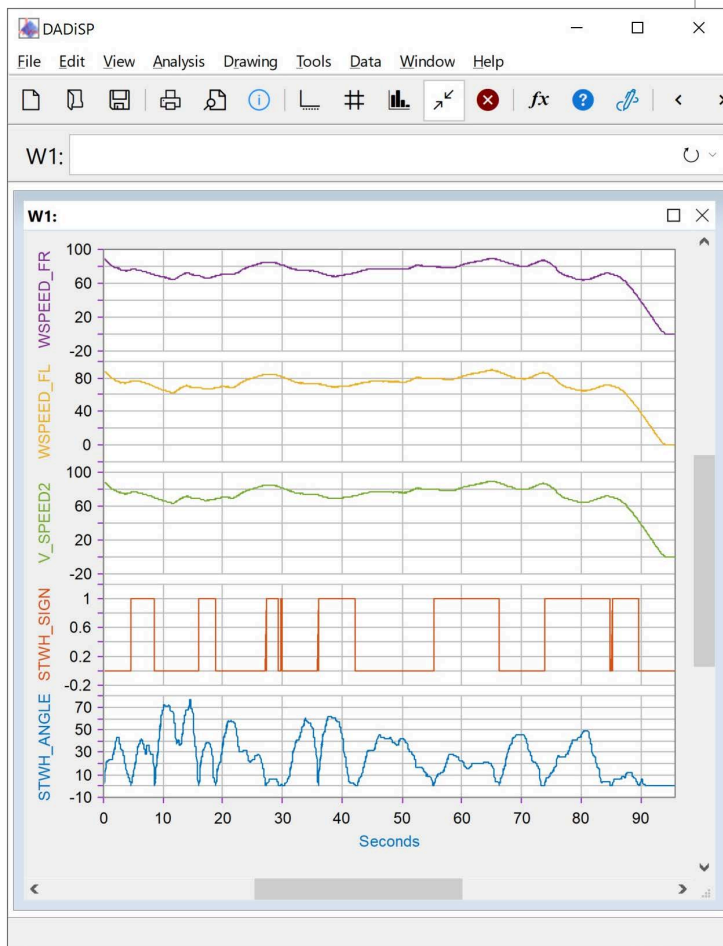


DADiSP/DEWESoft is a dialog based module to load data stored in a variety of DEWESoft file formats. DEWESoft files of any size and number of channels are supported.

DADiSP/DEWESoft loads the desired channels stored in a DEWESoft file and automatically applies the necessary channel specific sample rates and engineering units.

### KEY FEATURES

- Simple User Interface
- Fast and Direct DEWESoft Import
- Supports .dxd, .d7d, .d7z and .dxz formats
- Reads DEWESoft Files of any Size
- Applies Saved Channel Properties (sample rate, units, etc.)
- Supports Synchronous, Asynchronous and Complex Channels
- Automatic Display of Imported Channels



DEWESoft is a registered trademark of DEWESoft, d.o.o.

## DEWESoft® File Import Module

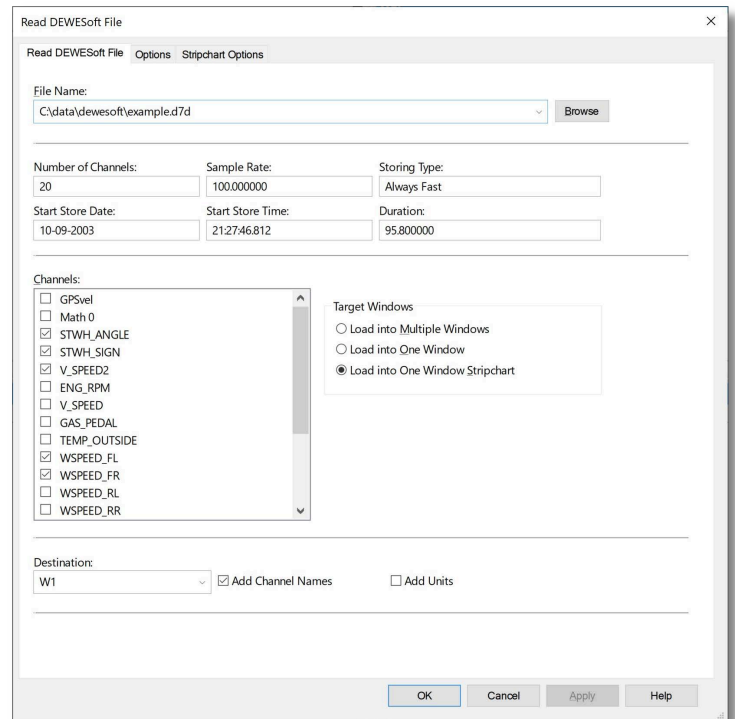
A DXD, D7D, D7Z or DXZ file is a binary data file format created by DEWESoft data conversion hardware and software. DEWESoft files can contain one or more channels and include amplitude units and scaling parameters to convert raw A/D counts to engineering output data.

### Simple Import Interface

Importing a DEWESoft file is as simple as pressing a button and selecting the file. After a file is chosen, a summary of the contents is displayed. The selected data channels are automatically converted to engineering units on the fly.

### Import Options

The channels can be loaded into separate Windows or combined into a single stripchart Window for display. Individual channel names are displayed and any combination can be selected for loading. Channel loading is optimized and buffered to provide quick access to large data files.



### DXD/D7D/D7Z/DXZ File Format

A DEWESoft file contains one or more channels saved in a variety of binary data formats. Synchronous channels generally contain regularly sampled data and asynchronous channels contain data sampled at arbitrary time intervals. Sample rate, engineering units and time parameters are also saved with the sampled values.

DADiSP/DEWESoft employs DEWESoft's DWDataReader library to isolate format details and eliminate file incompatibilities.

### Requirements

DADiSP/DEWESoft File requires [DADiSP 6.7 B02](#) or higher. [Contact us](#) for information about updating your current version of DADiSP.

## **DADiSP / DEWESoft® Functions**

DADiSP/DEWESoft File is a fully menu driven module. However, the following functions can be used on a standalone basis to read D7D, DXD, D7Z or DXZ files.

### **DEWESoft® File Functions**

rdwsgui     Displays the dialog box interface to read DEWESoft files.

loaddws     Loads a DEWESoft file into one or more windows.

readdws     Reads a DEWESoft file.